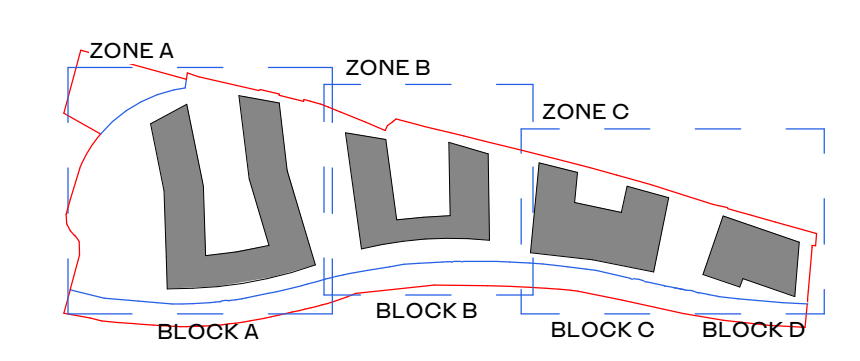


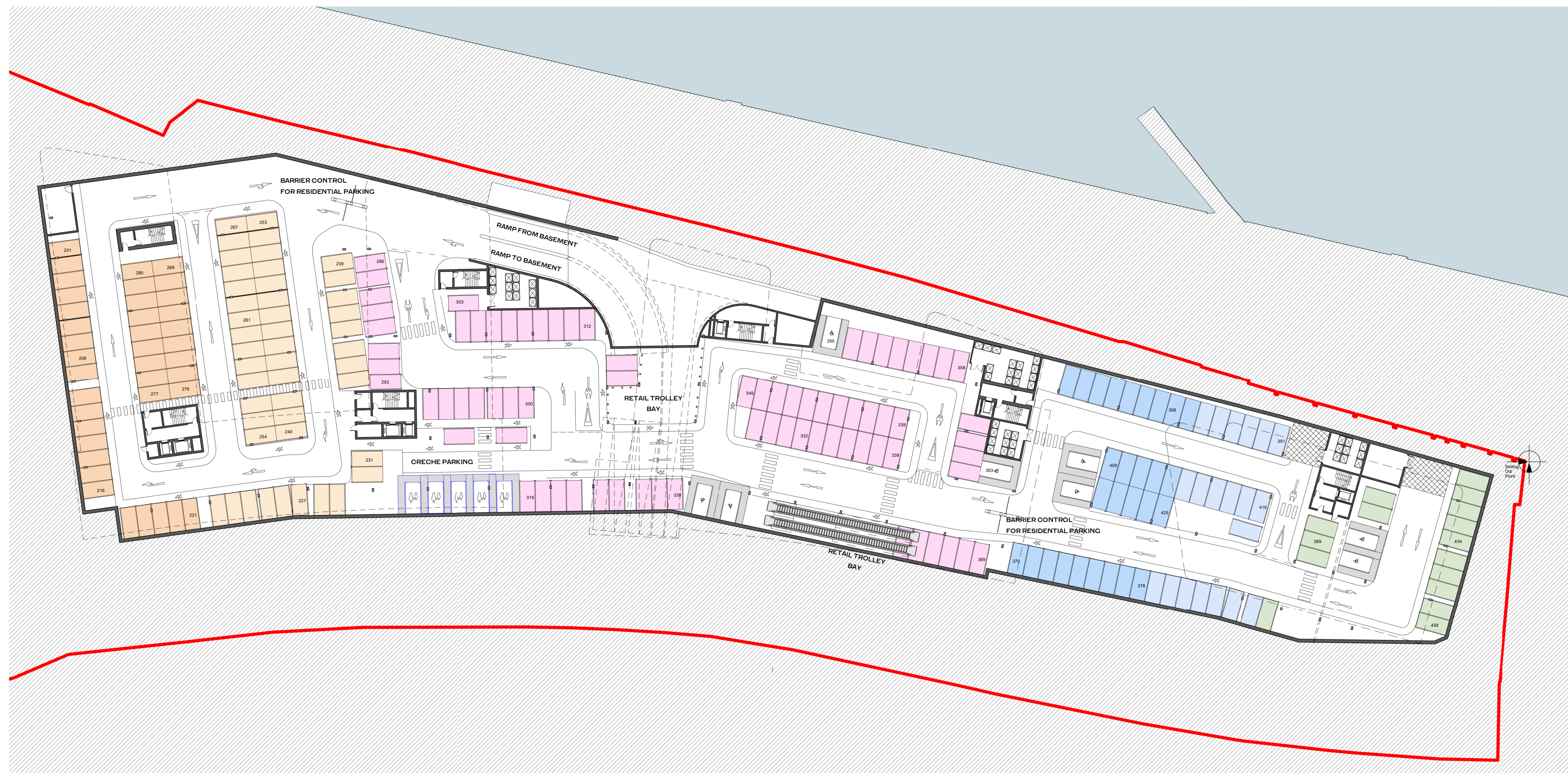
ALL DIMENSIONS TO BE CHECKED ON SITE
 NO DIMENSIONS TO BE SCALED FROM THIS DRAWING
 DRAWING IS TO BE READ IN CONJUNCTION WITH RELEVANT CONSULTANTS DRAWINGS



SITE DRAWINGS LEGEND:
 REFER TO BARRET MAHONY CIVIL ENGINEERING DRAWINGS FOR ALL DRAINAGE/ ROAD INFORMATION.
 SURVEY INFORMATION PROVIDED BY JONES ENGINEERING ON 23.4.2019.
 PLEASE REFER TO THE PAUL HOGARTH COMPANY LANDSCAPE DRAWINGS FOR ALL INFORMATION ON EXISTING AND PROPOSED TREES, MATERIAL FINISHES AND LAYOUT. ANY REFERENCE TO TREES/ HARD OR SOFT LANDSCAPING IN THIS DRAWING ARE INDICATIVE ONLY.

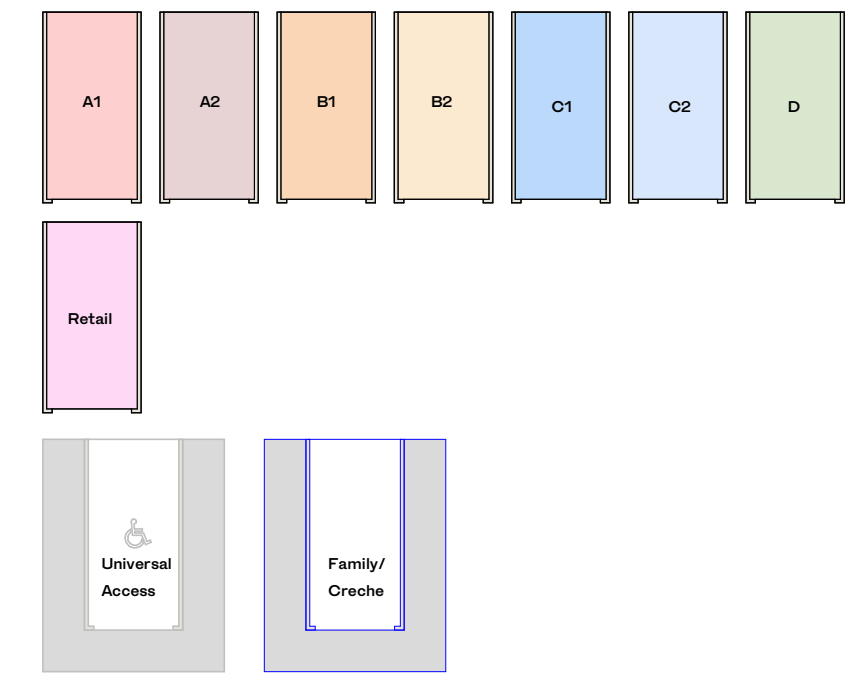


02 Car Parking - GA - LOWER GROUND FLOOR
 1:500



01 Car Parking - GA - BASEMENT
 1:500

Carparking



Basement Car Parking Schedule

Block Designation	Number
Retail - UA Parking Space	3
UA Parking Space	5
Family/Creche	5
B1	39
B2	46
C1	28
C2	20
D	16
Retail	77
Grand total:	239

Lower Ground Car Parking Schedule

Block Designation	Number
UA Parking Space	17
A1	59
A2	59
B1	32
B2	33
Grand total:	200

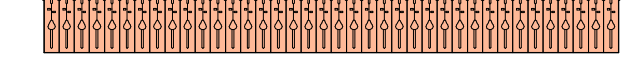
Car Parking Schedule

Block Designation	Number
Retail - UA Parking Space	3
UA Parking Space	22
Family/Creche	5
A1	59
A2	59
B1	71
B2	79
C1	28
C2	20
D	16
Retail	77
Grand total:	439

Bicycle Parking - Accommodation



Bicycle Parking - double stacked - Accommodation



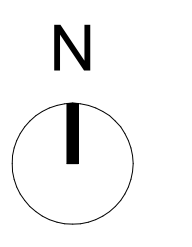
Bicycle Parking - Retail



Parking Schedule - Bicycles

Mark	Number of Spaces
Accommodation	1286
Retail	49
Grand total:	1335

ALL APARTMENT TYPES SHOULD BE READ IN CONJUNCTION WITH DRAWING NO.S P1601, P1602, P1603, P1604 AND HOUSING QUALITY



REV	DATE	DESCRIPTION	CHK	DRN
P1	26/11/2019	ISSUED FOR PLANNING APPROVAL	DB	OJ

ISSUED FOR PLANNING APPROVAL

CLIENT
 Atlas GP Limited

PROJECT
 Project Claremont

DRAWING
 Parking Plan - B01 - LOWER GROUND LEVEL, B02 - BASEMENT PLAN

PROJECT NUMBER
 950520

DATE
 26/11/19

SCALE@ A1:
 As indicated

DRAWN/CHECKED:
 OJ/ DB

REVISION	DRAWING NUMBER	STATUS CODE:
P1	CLR-HJL-A-1121	A1

Henry J Lyons

Architecture + Interiors
 henryjlyons.com

+353 1 888 3333
 info@henryjlyons.com

53.54 Pearse Street
 Dublin D02 K466